

SmileTiger TeleMeeting Server(TMS) 2010

Datasheet

Overview

SmileTiger TeleMeeting Server 2010 offers integrated phone and desktop data communication services for enterprise users.

This system enables users to enter rich media communication sessions by simply dialing another user's phone number. It is effortless and removes the communication hurdles due to inconvenience. It greatly facilitates the interaction among employees and pushes the productivity to the next level.

After you dialing a coworker's phone number, TMS automatically brings up a web conferencing session between you and your coworker with following features: audio, video, application sharing, slide show, whiteboard, advanced graph drawing, webtour and text messaging, etc. You enjoy the convenience and quality of ordinary phone call while having the powerful communication means available on your desktop instantly.

Features

- Seamlessly integrates phone and computer to provide rich media conversation sessions instantly
- Initiates a rich media session by simply dialing a coworker's phone number
- Rich media includes audio, video, application sharing, slide show, whiteboard, advanced graph drawing, webtour and text messaging, etc.
- SIP-based technology, works with most enterprise PBX/phone system
- Integrate with corporate Active Directory, minimizing the administration task
- Flexible deployment methods. Can be deployed either as a virtual machine image or standalone application.

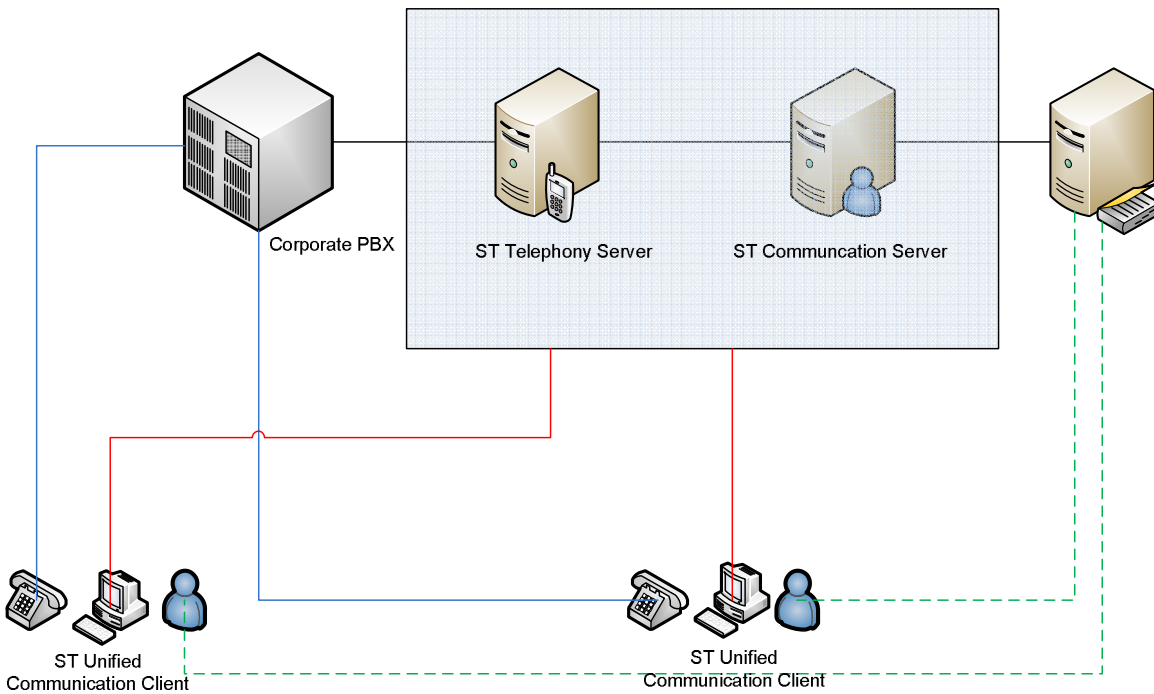
Usage Scenario

User A calls user B in the same company by dialing a prefix (can be any number you define at PBX) in front of user B's ordinary number. User B picks up the phone, and a web conferencing window also appears simultaneously on both users' computer screen. On top of phone conversation, they can do real time video streaming, sharing desktop, slide show, and other functions.

System Architecture

SmileTiger TeleMeeting Server contains two components: Communication Server and Telephony Server. Communication Server handles data transmission, and Telephony Server works with PBX to route phone calls.

User will install a SmileTiger TeleMeeting Client on their computer for all communications.



SmileTiger TeleMeeting Server 2010 System Architecture

System Requirements

Telephony Server Requirements

CPU	Pentium 1G Hz or equivalent
Memory	512 MB
Operating System	Linux
Network	Corporate LAN
PBX	Support SIP protocol

Communication Server Requirements

CPU	Pentium 1G Hz CPU or equivalent
Memory	512 MB
Operating System	Windows XP/2003/Vista/7
Network	Corporate LAN
Active Directory	This server should run in the same domain as Active Directory

Client Requirements

CPU	Pentium 1G Hz or other compatible CPU
Memory	128 MB
Operating System	Windows XP/2003/Vista/7
Phone	Any phone that connects to corporate PBX
Dependency	Sun Java JDK or JRE 1.6 or higher version
Network	Intranet or Internet access to SmileTiger Unified Communication Server
Optional	Video - Webcam, camcorder, or network camera

More Information

Download:

<http://www.smiletiger.com/communicationServer/download/download.htm>

Online Demo:

<http://www.smiletiger.com/communicationServer/demo/demo.htm>

Document:

<http://www.smiletiger.com/communicationServer/documentation/documentation.htm>

Purchase:

<http://www.smiletiger.com/v9s/pay.php>

Contact

Address: SmileTiger Software Corporation
57 Farmstead Road
Short Hills, NJ 07078
USA

Website: <http://www.smiletiger.com>

Email: sales@smiletiger.com

Phone: +1 973 218 6698